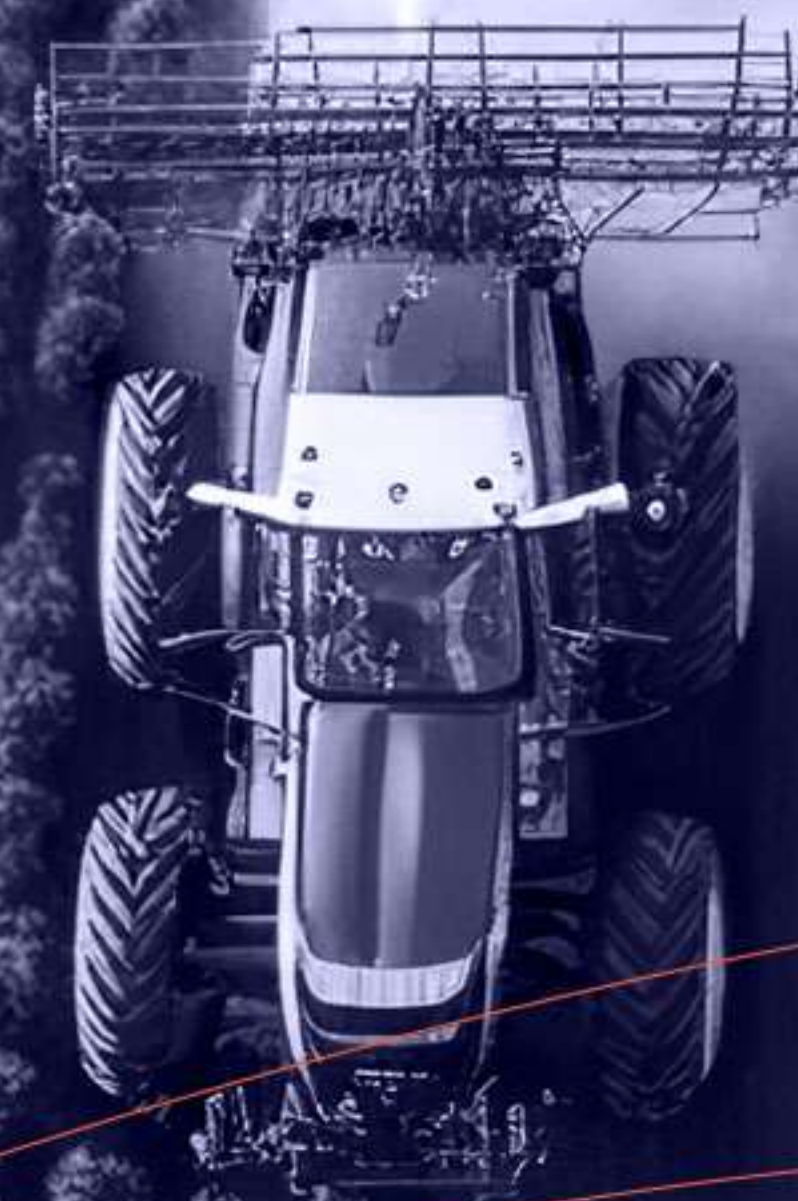




**Technology
that runs the
agribusiness.**



**Our technology
moves the
development.**





MISSION

Solving with agility, the demand for steel stamped wheels for agricultural and light industrial machinery.



VISION

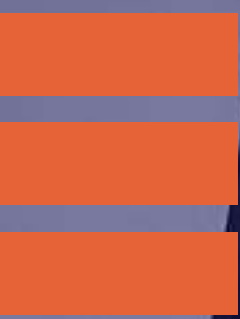
Be a reference on all Latin American market, recognized as a company where people are proud to belong and work, and its products are synonymous on safety and endurance.



VALUES

Respect
Transparency
Commitment





**A facility ready
to serve global
businesses.**

We are located in Cascavel, Paraná State, south of Brazil's countryside. **A place where Agriculture shows its strength and cooperation to make our Country one of the biggest food producers in the whole world.** Our facility occupies 13.500 square meters and our team is composed by technicians and engineers, professionals on the art of metal working.

Total area



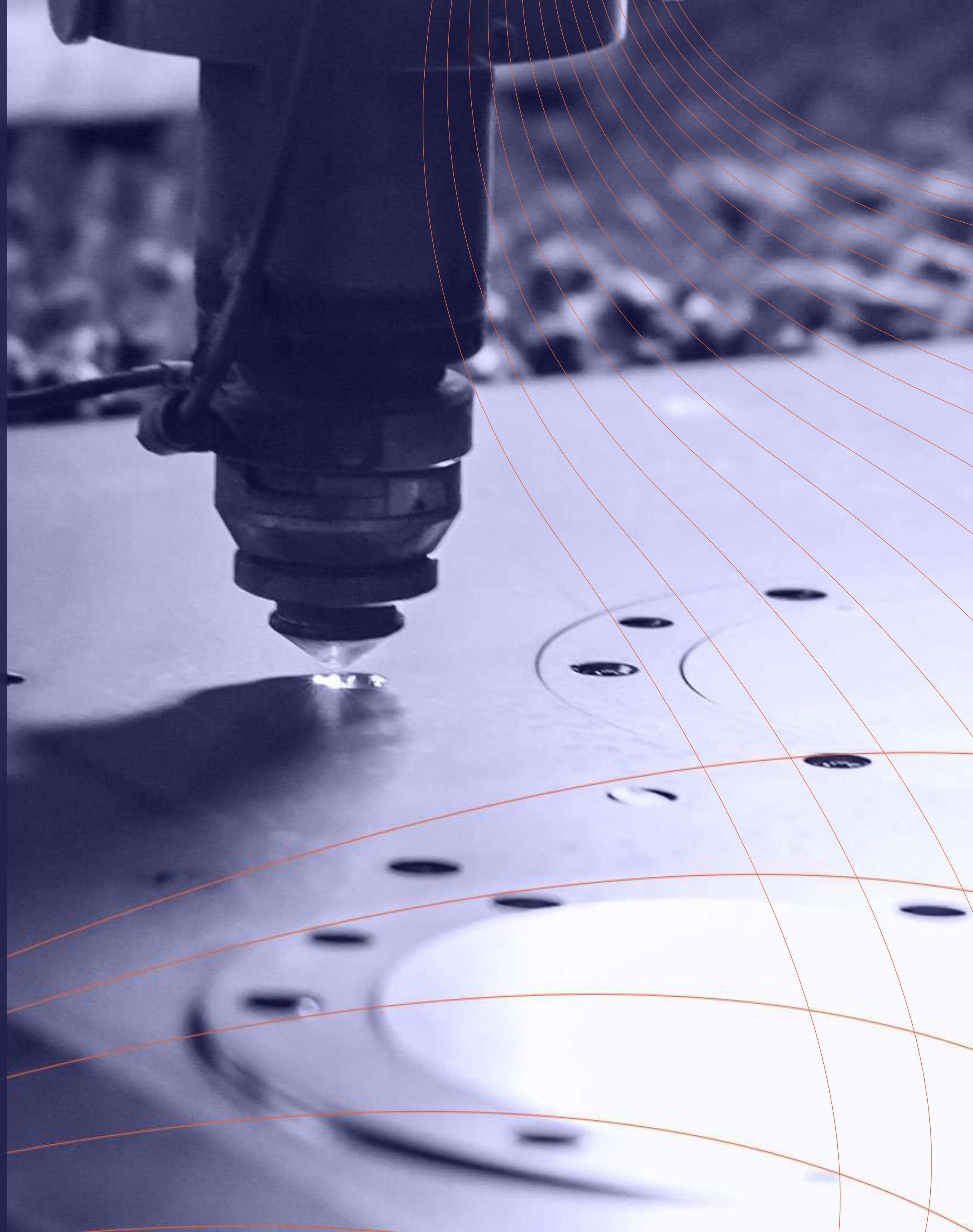
Administrative area





**We do care on
every production
process.**

WHEELS PRODUCTION.



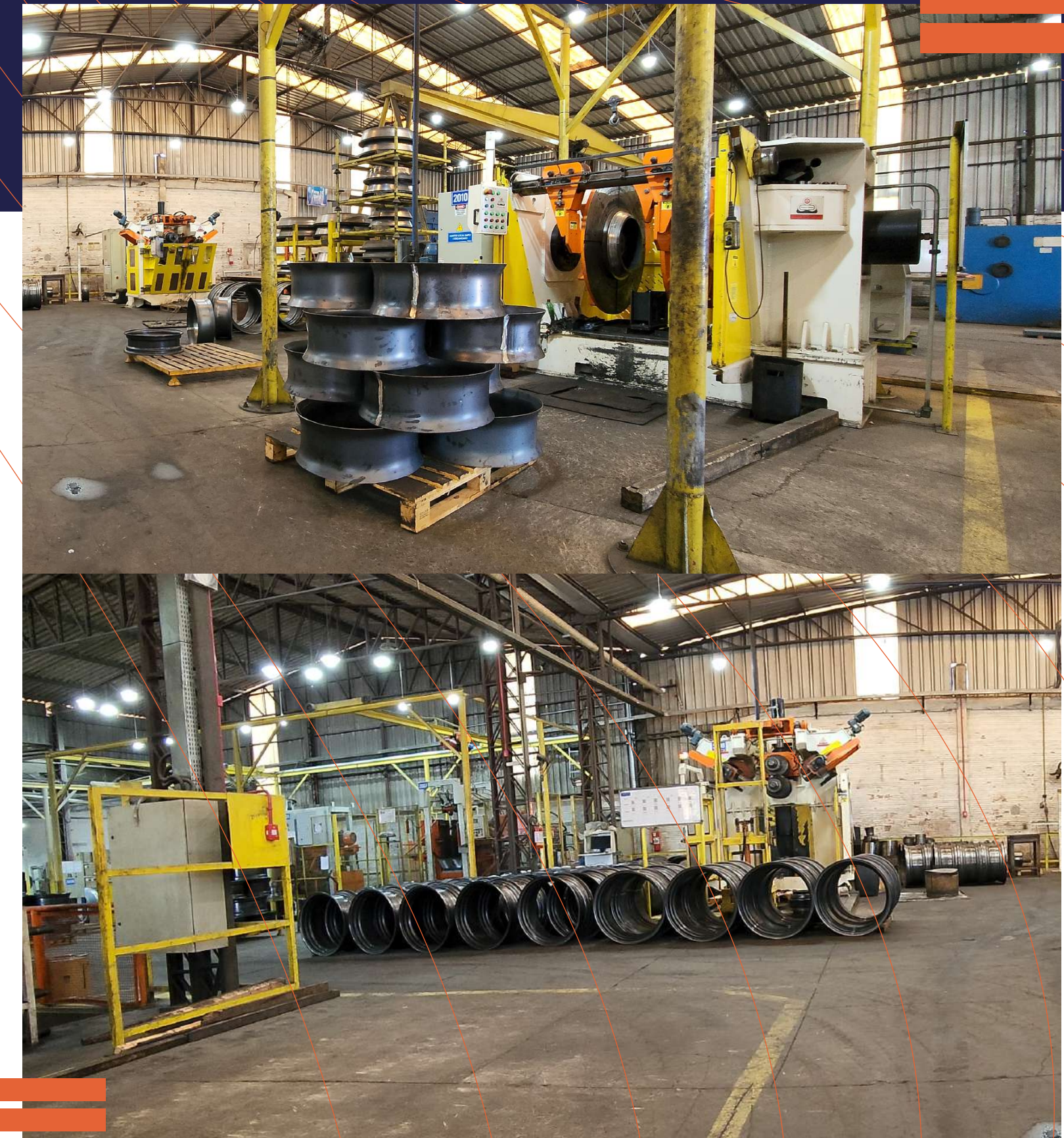
Steel Cutting

- High definition plasma cutting system, 260A (3000 x 6000mm), with exhausted table (no smoke, zero pollution);
- Hydraulic shear 12,7 x 3060mm.



Roll Forming

- 3rolls hydraulic plate bending machine;
- 4rolls fully CNC hydraulic plate bending machine with transfer system (input and output)
- 2 longitudinal butt welding positioners
- 2 longitudinal grinders for butt welding trimming



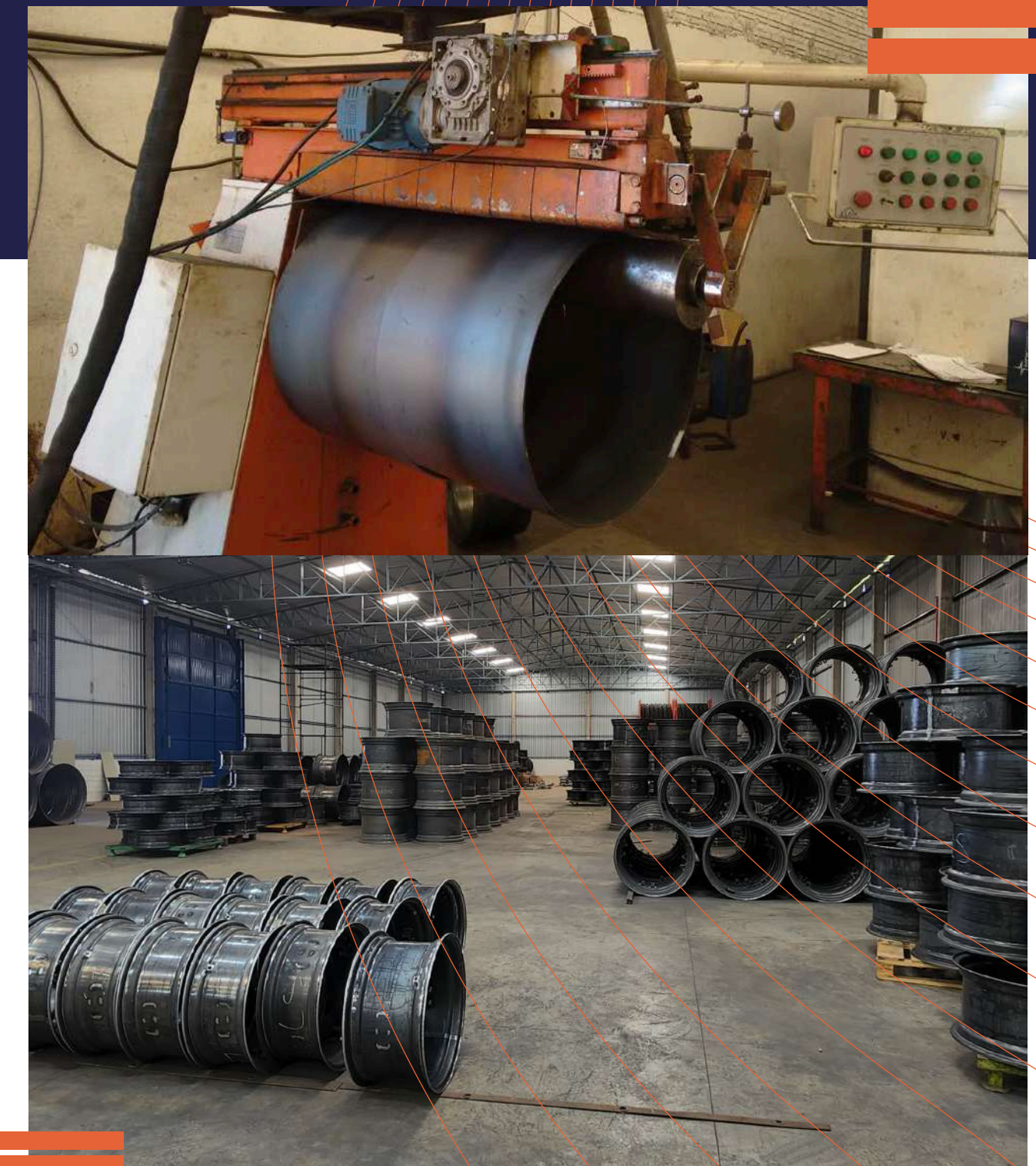
Roll Forming

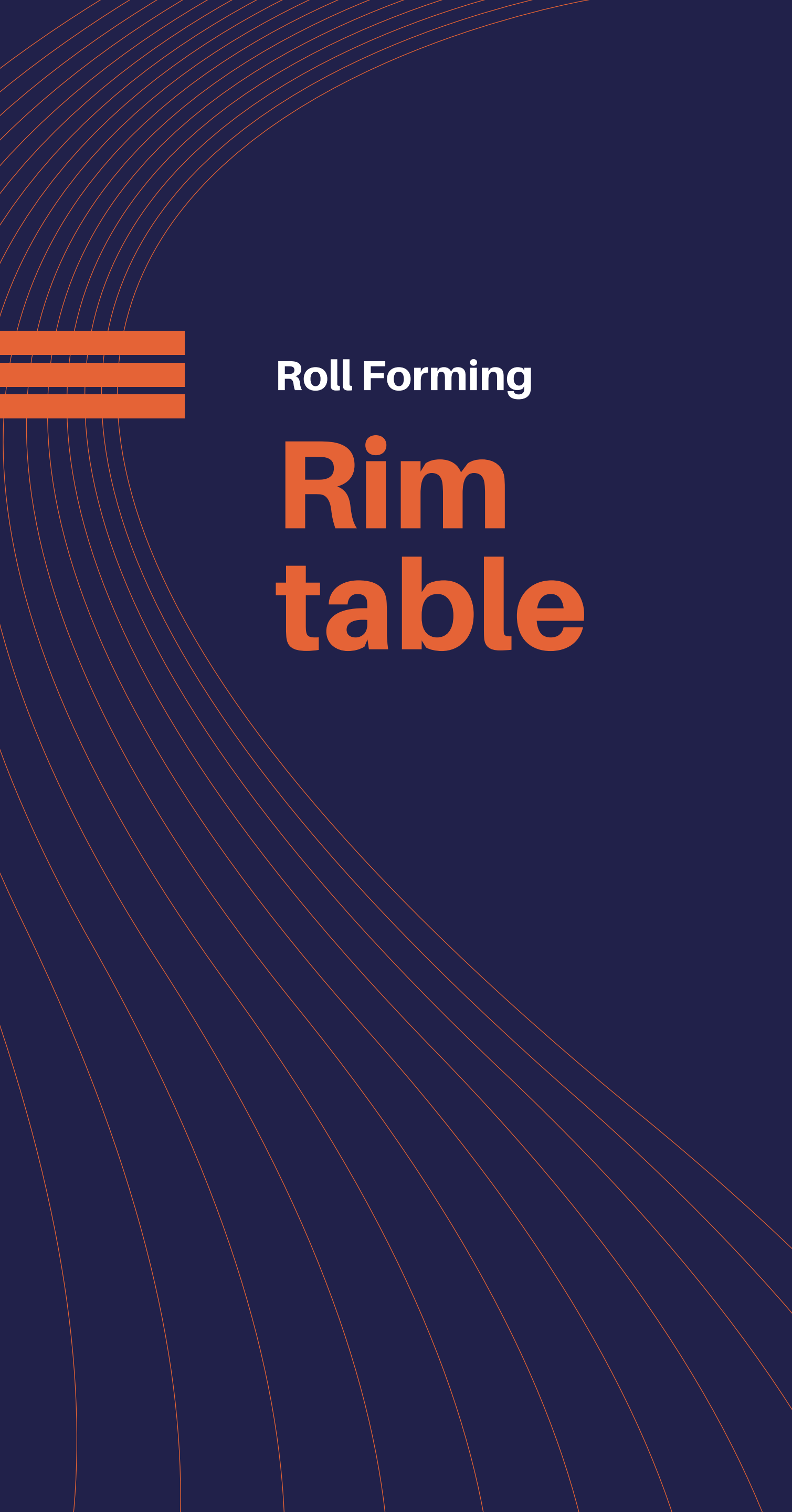
- 400 ton double effect hydraulic horizontal flaring press
- 150 ton single effect hydraulic vertical flaring press
- 4 lines of roll forming machines
 - width from 7 to 12 inches / diameter from 20 to 28 inches;
 - width from 8 to 27 inches / diameter from 30 to 54 inches;
 - width from 4.50 to 6 inches / diameter from 12 to 18 inches;
 - width from 5 to 10 inches / diameter from 15 to 18 inches;



Roll Forming

- Rims profiles attended:
 - W and DW (symmetric and asymmetric ones)
 - E, F and LB
 - all 5 degrees drop center – thickness until 6.5mm





Roll Forming

Rim table

Roda peça única (disco soldado) / *Single Piece Wheel (welded)*

Perfil / Profile	4.50E	5,00	5.0K	5.50F	6.00F	W07	8.0LB	W08	W09	10LB	W10	W11	W12	DW10	DW12	DW16	DW20		DW27
Diâmetro (polegadas/pulgadas) Diameter (inches)		10																	
	12																		
							15			15									
	16		16	16	16		16												
				18		18		18	18										
						24						24	24						
															26		26		
													28						
																30	30		
																			32
																34			
						36					36			36					
														38	38				
											46		46						
														48					

Aro Ajustável (com presilhas e disco repuxado) / *Adjustable Rim (with studs and pressed inner disc)*

Perfil / Profile	W07	W08	W09	W10	W12	DW12	DW16	DW21
Diâmetro (polegadas/pulgadas) Diameter (inches)	24	24	24	24	24			
						26		
	28		28	28	28			
							30	
								32
							34	
		54		54				



Pressing and Stamping



- Hydraulic presses – single effect from 150 to 250 tons;
- Hydraulic press – double effect 960 tons;
- In site tooling;
- Maximum thickness pressing admitted: 16,0mm



Milling

- 2 conventional high clearance lathes – 1.500mm turning admitted;
- 1 conventional lathe;
- CNC machining center – 1.250mm admitted;
- Universal Milling and Drilling machine;
- ISO40 Drilling machine.



Welding



- Fully robotic welding system with 2 orbitals turning tables;
- 3 automatic welding positioners – 1.500mm admitted;
- 1 automatic hydraulic welding positioner – 400mm admitted;
- All welding sources by Fronius.



Finishing and painting

- Shot blasting machine;
- Surface treatment with phosphatization;
- Electrostatic powder coating.



Preparation and Dispatch



Our team is well trained and our structure prepared to organize, load and dispatch in with the maximum agility, making sure of guarantee the best experience and service, taking care about wheels integrity.



QUALITY

We consider quality as one of the main sources of our strength, bringing growth, wealth and evolution wherever and whenever it takes!

Also brings peoples power, inspiring all to make better in order to achieve the excellence!

TÊCPAR

CERTIFICADO DE CONFORMIDADE

O Instituto de Tecnologia do Paraná certifica que o Sistema de Gestão da Qualidade da organização

RDP INDUSTRIA DE PEÇAS AGRÍCOLAS LTDA.

Rua das Indústrias, 1478
Cascavel – PR – Brasil

está em conformidade com os requisitos da norma

ABNT NBR ISO 9001:2015

Este certificado é válido para o escopo

INDUSTRIALIZAÇÃO E COMERCIALIZAÇÃO DE RODAS EM AÇO ESTAMPADO PARA USO AGRÍCOLA E INDUSTRIAL LEVE.

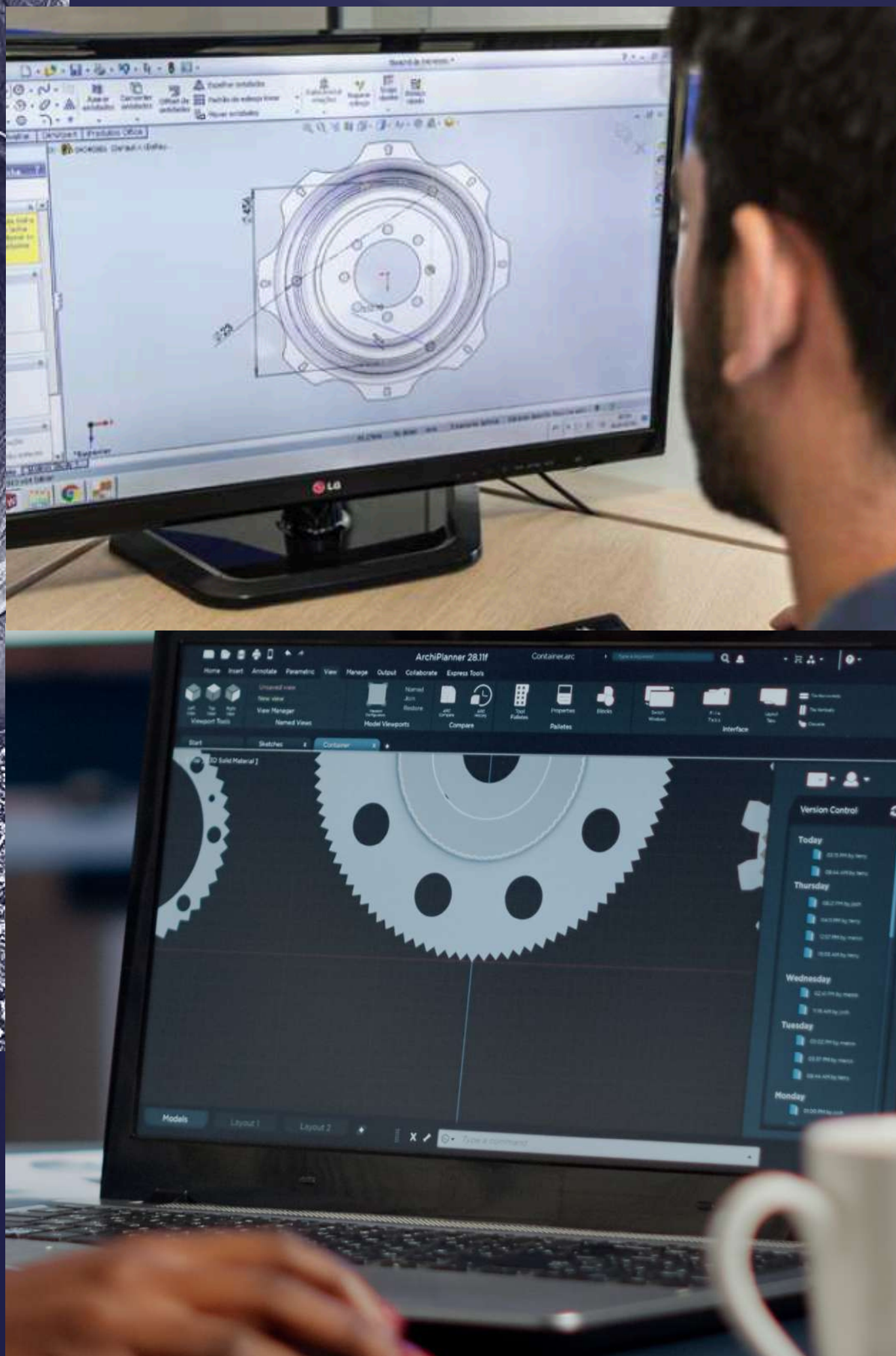
Número do Certificado: 10068539
Revisão: 00
Emissão: 28/07/2023
Validade: 28/07/2026

Gerente da Divisão de Certificação

INSTITUTO DE TECNOLOGIA DO PARANÁ
Rua Professor Algaço Munhoz Mader 3775 - CIC - CEP 81350-010 - Curitiba - Paraná - Brasil
Fone: (41) 3316 3070 Fax: (41) 3316 3061 Site: www.tecpar.br/cert e-mail: cert@tecpar.br





We are powered by SolidWorks for technical drawings, Siemens Preactor for Advanced Programming Schedule Systems, full ERP and quality system management.

Our projects of rims are in accordance with ALAPA (Latin American Rims and Tires Association), ETRTO (European Tire and Rim Technical Organization). Our measuring devices are calibrated, imported from USA, supplied by TRA (Tires and Rims Association).

Our company is certified ISO 9001:2015 (certification 10068539) and we operate in total accordance with municipality, state and federal laws, overall environmental licences.





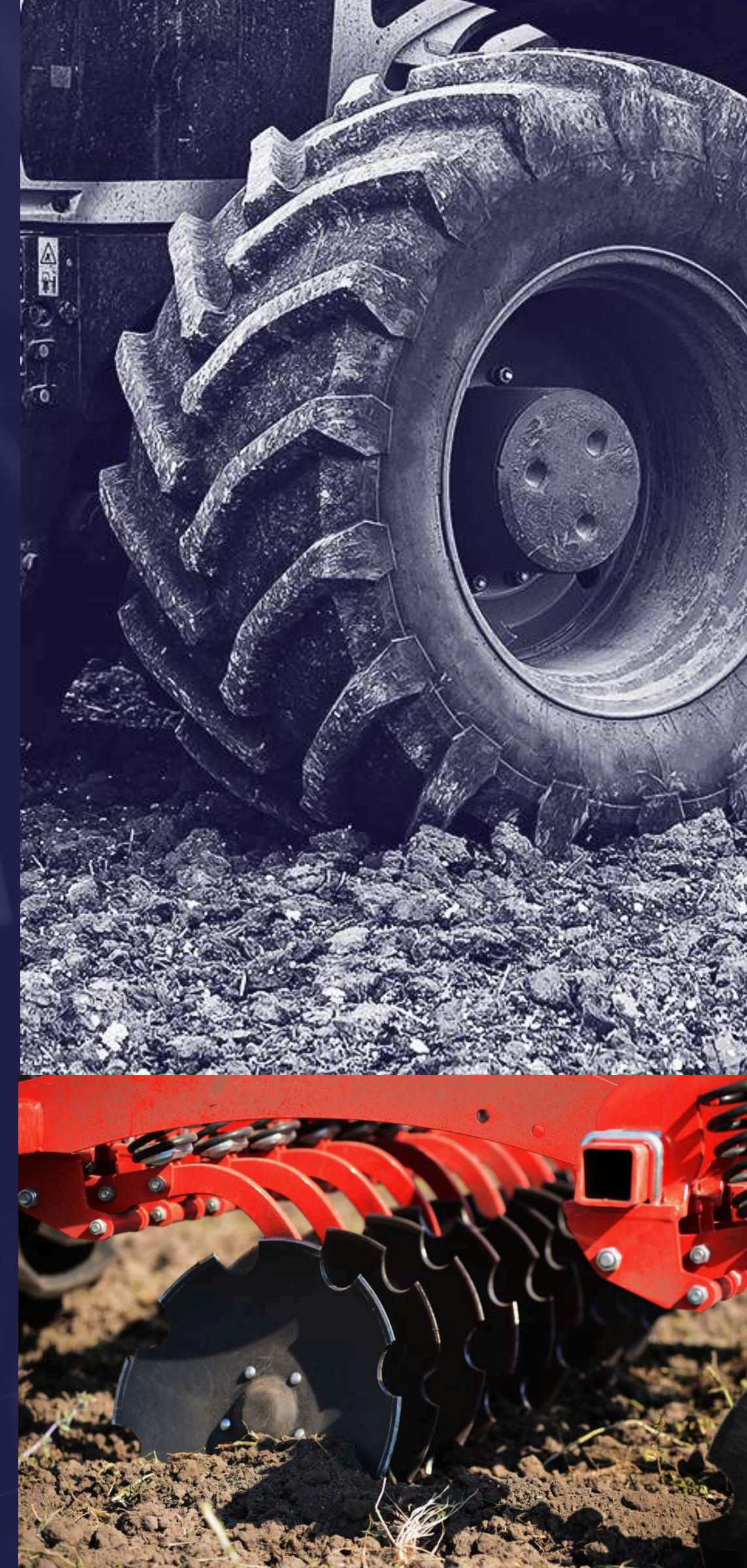
Our products are seeds of innovation.

In every single piece of wheel we make, it brings our strength and our joy for labor and doing every time, the best! We know... Agribusiness never stops! Seeding, spraying, cropping... from the farming fields comes our inspiration. For us, is a great honor to participate somehow in the way of food production industry. This is our purpose.



== OEM

- Adjustable wheels for Agricultural Tractors (Rims + Discs)
- Narrow single piece wheels for spraying (self propelled and towed)
- Single piece wheels for general purpose



A person stands in a field of tall grass, looking towards a combine harvester in the distance. The sun is low on the horizon, creating a silhouette effect. The sky is dark with some clouds. There are orange lines in the top left corner and bottom right corner.

Our energy comes from the
movement of farming
machinery and people.

Our excellence is seeded in the
soil of knowledge and technologies
that drives our dreams.

Let's make it happens together, a future
full of wealth, towards the prosperity!





 (45) 3225 6447
 rodapar.com.br

Rua das Indústrias, 1478 - Distrito Industrial
Postal Code 85818-116 - Cascavel - PR - Brasil